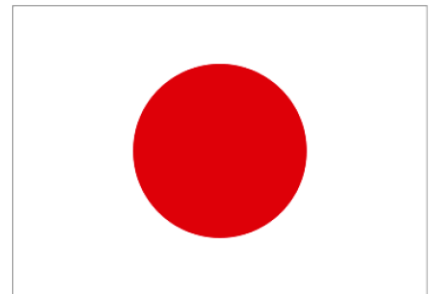


**RoLD 2019
INTERNATIONAL FIELD TRIP
SOCIAL INNOVATION &
JUSTICE SYSTEM**

**29 MAY TO 2 JUNE 2019
TOKYO, JAPAN**



Hotel East 21 Tokyo



Address: 6-3-3, Toyo, Koto Ward, Tokyo 135-0016
TEL : +81-03-5683-5683
<https://www.hotel-east21.co.jp/en/>
Access: Tokyo Metro Tozai Line
"Toyochō Station" Exit 1 (7 minutes on foot)

Team Contacts



ออย	mutitao	+66 89 668 9949
ปุ้ย	puianuwan	+66 99 619 5519
นัท	happynatty	+66 91 552 4346
ดาว	dawadee	+66 81 986 6434
เปิ้ล	71211ple	+66 85 494 9198
ฝน	26Pannarat27	+66 83 132 8748
มาวิน	mawindankul	+66 81 626 3747
มุก	kdcsupport	



อาคารจีพีเอฟ วิทยุ อาคารบี ชั้น 16 ถนนวิทยุ เขตปทุมวัน กรุงเทพฯ 10330
GPF Building 16th Floor, Witthaya Road, Bangkok 10330, Thailand
Tel: +66 2118 9400 Ext. 213 - 214 Email: rold@tijthailand.org

TIJ EXECUTIVE PROGRAM ON THE RULE OF LAW AND DEVELOPMENT
RoLD 2019 : INTERNATIONAL FIELD TRIP
SOCIAL INNOVATION & JUSTICE SYSTEM
29 MAY TO 2 JUNE 2019
TOKYO, JAPAN

ITINERARY

Departure Day : WEDNESDAY, 29 MAY 2019

Dress code: Comfortable

- 21.00 Meeting at Suvarnabhumi Airport : Row C
RoLD Program registration and flight check-in
- 23.50 Departure to Tokyo by TG642 departure time at 23.50 hr.

Field Trip DAY 1: THURSDAY, 30 MAY 2019

Dress code: Smart Casual

- 08.10 Arrive at Narita International Airport
- 09.45 Depart for Tokyo
- 11.15 Arrived at restaurant TOKYO SHIBA TOFUYA UKAI, where participants can relax and enjoy the extraordinary atmosphere in the restaurant with 6,600 m² of extensive Japanese gardens located at the foot of Tokyo Tower.
- Address: 4-4-13 Shiba-koen, Minato-ku, Tokyo 105-0011
TEL : +81-03-3436-1028 <https://www.ukai.co.jp/english/shiba/>
Access: By Train
5 mins walk from the Akabane-bashi-guchi Exit of Oedo Line Akabane-bashi Station
9 mins walk from the No. 1 Exit of Hibiya Line Kamiyacho Station
7 mins walk from the A4 Exit of Mita Line Shiba-koen Station
- 11.30 – 13.00 Lunch (special set course menu)
- 14.00 – 14.30 Depart for the co-working space, GRID Nagatacho
- 14.45 – 17.00 Lecture on “Dormant Bank Accounts” by the Director, Office for Utilizing Dormant Deposits, Cabinet Office, Government of Japan
- Address: Nagatacho GRID, ATTIC Conference (6F)
2 Chome-5-3 Hirakawacho, Chiyoda City, Tokyo 102-0093, Japan
Access: By Train: 3 mins walk from Nagatacho Subway Station
<https://grid.tokyo.jp/note>
- 17.00 – 17.30 Depart for Shinjuku area



18.00 – 19.30 Dinner at Rokkasen (六歌仙)

Address: 1 Chome-3-1, Shinjuku City, Nishishinjuku, Tokyo, Japan 160-0023

TEL : +81-03-3348-8676

<https://www.rokkasen.co.jp/en/>

Access: By Train

2 mins walk from Seibu Shinjuku Line, Shinjuku station

1 min walk from Marunouchi Line, Shinjuku station

3 mins walk from JR Line, Shinjuku station

19.30 – 20.00 Depart to check in at Hotel East 21 Tokyo

Address: 6-3-3, Toyo, Koto Ward, Tokyo 135-0016

TEL : +81-03-5683-5683

<https://www.hotel-east21.co.jp/en/>

Access: Tokyo Metro Tozai Line “Toyochō Station” Exit 1 (7 minutes on foot)

Field Trip DAY 2: FRIDAY, 31 MAY 2019

Dress code: RoLD Polo shirt with optional jacket

07.00 – 08.00 Breakfast at Hotel

08.15 – 09.30 Depart for UNAFEI

09.40 – 11.40 UNAFEI Special Lecture and Q&A Session

The United Nations Asia and Far East Institute for the Prevention of Crime and the Treatment of Offenders (UNAFEI)

Address: 2-chome-1-18 Mokuseinomori, Akishima, Tokyo 196-8570, Japan

TEL : +81-42-500-5100

<https://www.unafei.or.jp/english/index.html>

12.15 – 13.15 Lunch at Centro Restaurant

Address: Forest Inn Showakan

<https://www.showakan.co.jp/en/#restaurant>

Showa no Mori, Akishima-shi, Tokyo, 196-8601

TEL : +81-42-542-1234

Access: Shuttle bus service from Akishima Station North Exit of JR Ome Line.

(About 7 minutes on foot)

13.30 – 15.30

Group B (Bus B)

Tama Juvenile Training School (Juvenile correctional facility)

Address: Midori cho 670, Hachioji city, Tokyo JAPAN 193-0932

Around 40 minutes by bus from UNAFEI if there is no traffic jam. This facility is taking the central role of Japan’s juvenile correction system.

14.00 – 15.30

Group A (Bus A) [*will be divided into 2 small groups A1 and A2]

Medical Correction Center in East Japan (Medical Prison)

Address: Mokuseino mori 2-1-9, Akishima city, Tokyo JAPAN 196-0035

Just a couple of minutes by walking from UNAFEI building.

This is the most advanced medical prison in Japan.

15.45

Departure to central Tokyo



17.30 Drop off at Ginza area for participants' own leisure and dinner

19.30 Return to Bus meeting point for returning to hotel

**Participants who want to return to hotel on their own please let the staff know upon dropping off*

Hotel East 21 Tokyo

Address: 6-3-3, Toyo, Koto Ward, Tokyo 135-0016

TEL : +81-03-5683-5683

<https://www.hotel-east21.co.jp/en/>

Access: Tokyo Metro Tozai Line "Toyochō Station" Exit 1 (7 minutes on foot)

Field Trip DAY 3: SATURDAY, 1 JUNE 2019

Dress code: RoLD1+2+3 Yellow shirt

07.00 – 09.00 Breakfast at Hotel

09.15 – 09.45 Depart for the Royal Thai Embassy, Tokyo

To pay a courtesy call on the Ambassador of Thailand to Japan

The Royal Thai Embassy, Tokyo

Address: 3-14-6, Kami-Osaki, Shinagawa-ku, Tokyo 141-0021

TEL : +81-3-5789-2433

<http://site.thaiembassy.jp/th/contact/>

09.45 – 10.00 Registration

10.00 – 12.00 Lecture on Japan's social innovation/social enterprise platform for a better society:

Presentation by Borderless Japan Corp., a group of social entrepreneurs solving the problems through social business. (This session will be held at the Royal Thai Embassy, Tokyo)

Borderless Japan Corp. - Tokyo Head Office

Address: 6F Yaesuitchigaya bld. 2-17, Ichigayatamachi Shinjuku-ku Tokyo, 162-0843 Japan

TEL : +81-3-5227-6980

<https://www.borderless-global.com/>

12.00 – 12.30 Depart for Lunch

12.30 – 13.45 Lunch at 'Hokkaido Restaurant' in Shibuya area

Options after lunch:

1) leisure in Shibuya area and return to bus meeting point by 17.00

2) depart to visit Daikanyama T-Site and return to bus meeting point by 17.00

**Participants who want to return to hotel on their own please let the staff know upon dropping off*

Drop off at T-Site Daikanyama, a recent addition complex in the area situated specialty shops and restaurants including Daikanyama Tsutaya Books famed for its theme 'A library in the wood'.

Daikanyama T-Site / Daikanyama Tsutaya Books

Address: 17-5 Sarugakucho, Shibuya-ku, Tokyo 150-0033

TEL : +81 3-3770-7555

<https://store.tsite.jp/daikanyama/english/>



- 17.00 Return to Bus meeting point for returning to hotel (Designated 1 bus for each area)
***Participants who want to return to hotel on their own please let the staff know upon dropping off**
- 17.40 Arrive at hotel and prepare for dinner at hotel
- 19.00 – 22.00 Memorable Night Dinner ***Dress theme: White with your True Color***

Field Trip DAY 4: SUNDAY, 2 JUNE 2019

Dress code: Casual

- 07.00 – 09.45 Breakfast at Hotel
- 10.15 Meet at lobby for checkout
- 10.30 Depart for Shisui Premium Outlet
 Address : 2 Chome-4-1, Iizumi, Shisui, Inba District, Chiba 285-0912, Japan
 TEL : +81 43-481-6160 <https://www.premiumoutlets.co.jp/en/shisui/>
- 12.00 – 14.30 Free time for leisure, shopping and lunch
- 14.30 – 15.00 Depart to Narita Airport Terminal 1 (South Wing)
- 15.30 Check-in at TG Counter
- 17.25 Departure to Bangkok by TG677
- 21.55 Arrive safely at Suvarnabhumi International Airport

*****Schedule is subject to change for appropriate arrangement*****



LECTURE

30 May 2019: Dormant Bank Account at GRID Nagatacho

- 14.45 – 16.30 Lecture on “Dormant Bank Accounts” by Ms. Miho MATSUSHITA, the Director, Office for Utilizing Dormant Deposits, Cabinet Office, Government of Japan
- 16:3 – 17.00 TIJ presents the token of appreciation to UNAFEI and group photo with RoLD participants

GRID is a sharing business community space in Tokyo as a new infrastructure that allows Gaiax's new company building to be used widely as a new community space, rather than just as a company building itself, and to connect people and people creatively. (GaiaX Group focuses on supporting social services such as Mini-blog [represented by Twitter] and Social Networking Services [represented by mixi and Facebook] by providing one-stop solutions. The one-stop solutions include creating and operating online communities, constant monitoring of online bulletin boards and the postings to construct safe environment, and offering user support for the social applications.)



Nagatacho GRID, ATTic Conference (6F)
2 Chome-5-3 Hirakawacho, Chiyoda City,
Tokyo 102-0093, Japan

<https://grid.tokyo.jp/note>



LECTURE

31 May 2019: Japan Justice System at UNAFEI



UNITED NATIONS ASIA AND FAR EAST INSTITUTE
FOR THE PREVENTION OF CRIME AND THE TREATMENT OF OFFENDERS

09:40 am	Welcome message by Mr. Takeshi Seto, Director of UNAFEI
09:50 am	TIJ presents the token of appreciation to UNAFEI and group photo with RoLD participants
10:00 am	UNAFEI Special Lecture:
	Prosecution services by Ryo FUTAGOISHI Professor of UNAFEI
	Community corrections by Hiroyuki WATANABE Professor of UNAFEI
	and volunteer probation officer system
11:15 am	Q & A session
11:40 am	Depart to lunch

The United Nations Asia and Far East Institute for the Prevention of Crime and the Treatment of Offenders (UNAFEI) is one of the United Nations Crime Prevention and Criminal Justice Programme Network Institutes (PNI), established in 1962 by an Agreement between the United Nations and the Government of Japan. UNAFEI's main activities are to hold international training courses/seminars for criminal justice practitioners from around the world and to undertake research in the field of prevention of crime and the treatment of offenders.

United Nations Asia and Far East Institute for the Prevention of Crime and the Treatment of Offenders
2-1-18, Mokuseinomori, Akishima-shi,
Tokyo 196-8570, Japan

TEL. +81-42-500-5100
FAX. +81-42-500-5195

<https://www.unafei.or.jp/english/index.html>



อาคารจีพีเอฟ วิทยุ อาคารบี ชั้น 16 ถนนวิทยุ เขตปทุมวัน กรุงเทพฯ 10330
GPF Building 16th Floor, Witthaya Road, Bangkok 10330, Thailand
Tel: +66 2118 9400 Ext. 213 - 214 Email: rold@tijthailand.org

SITE VISIT

31 May 2019: Japan Justice System

Medical Correction Center in East Japan (Medical Prison)

14.00 – 15.20

Group A (Bus A) [*will be divided into 2 small groups A1 and A2]

Lectue:

Overview of the Medical Correction Center by
Yusuke OKUMURA (medical doctor), Head of Medical Correction Center

Facility Tour:

Yusuke OKUMURA Head of Medical Correction Center
Yuichiro MORITA Director of General Affairs

Visitation Support:

Syunji OGAWA Director of Medical Division (medical doctor)
Hiroshi HORI Total coordinator of this center

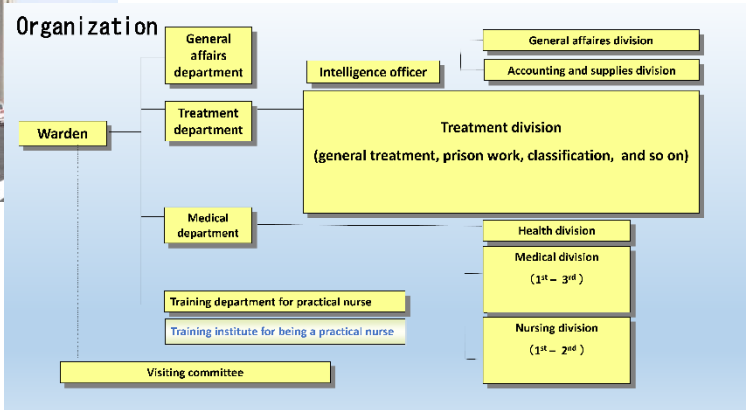
15.20 – 15.30

Thank you message by RoLD Representatives

The Medical Correction Center in East Japan was established in September 1878 and later renamed to "Hachioji Medical Prison" in April in 1951. In 1966 the facility was registered as a hospital and training institute for producing a practical nurse which has trained 1,062 graduates until the end of March 2017.

The Medical Correction Center in East Japan
Mokuseino mori 2-1-9, Akishima city,
Tokyo JAPAN 196-0035

Just a couple of minutes by walking from UNAFEI building.



SITE VISIT

31 May 2019: Japan Justice System

Tama Juvenile Training School (Juvenile correctional facility)

14.10 – 15.20

Group B (Bus B)

Visitation Support:

Atsushi KIMURA

Superintendent (Head of the facility)

Atsuko KAWASHIMA

Deputy superintendent

Facility Tour:

Kouji YOSHIMURA

Total coordinator of Juvenile correctional facility

15.20 – 15.30

Thank you message by RoLD Representatives

This facility is taking the central role of Japan's juvenile correction system.

Tama Juvenile Training School (Juvenile correctional facility)

Midori cho 670, Hachioji city, Tokyo JAPAN 193-0932



LECTURE

1 June 2019: Social innovation/Social Enterprise Platform at The Royal Thai Embassy, Tokyo

09.45 – 10.00 Registration

10.00 – 12.00 Lecture on Japan social innovation/social enterprise platform for a better society:
Presentation by Masayoshi Suzuki, Executive Vice President, Borderless Japan Corporation, a group of social entrepreneurs solving the problems through social business.

Masayoshi Suzuki was born in 1979 in Hiroshima Prefecture, Japan. After graduating with a master's degree in 2004, he began work at MISUMI Group Inc. In 2007, he co-founded Borderless Japan Corporation along with Kazunari Taguchi. Borderless Japan is a platform (and community) that empowers social entrepreneurs to co-create social impact through the sharing of capital, know-how and related assets. To date, Borderless Japan has nurtured 24 businesses in 8 countries.

Lecture content:

- Why Borderless Japan was founded (background and context)
- What is a social business?
- The mechanism behind the creation of 24 businesses.
- Case-study: Myanmar

Borderless Japan Corp. - Tokyo Head Office
Address: 6F Yaesuitchigaya bld. 2-17,
Ichigayatamachi Shinjuku-ku Tokyo, 162-0843
Japan
TEL : +81-3-5227-6980
<https://www.borderless-global.com/>



BORDERLESS
SOCIAL BUSINESS FOR
CHANGE



Royal Thai Embassy
3-14-6, Kami-Osaki, Shinagawa-ku,
Tokyo 141-0021, Japan
<http://www.thaiembassy.jp>



อาคารจีพีเอฟ วิทยุ อาคารบี ชั้น 16 ถนนวิทยุ เขตปทุมวัน กรุงเทพฯ 10330
GPF Building 16th Floor, Witthaya Road, Bangkok 10330, Thailand
Tel: +66 2118 9400 Ext. 213 - 214 Email: rold@tijthailand.org

1 June 2019: Options after lunch

Option 1: Shibuya

Shibuya (渋谷区 *Shibuya-ku*) is a special ward in Tokyo, Japan. A major commercial and business center, it houses the two busiest railway stations in the world, Shinjuku Station (southern half) and Shibuya Station. As of May 1, 2016, it has an estimated population of 221,801 and a population density of 14,679.09 people per km² (38,018.7/sq mi). The total area is 15.11 km² (5.83 sq mi).

Source: <https://en.wikipedia.org/wiki/Shibuya>,
<https://www.gotokyo.org/en/destinations/west-tokyo/shibuya/index.html>,
<https://www.shibuyastation.com/shibuya-area-overview/>

The name "Shibuya" is also used to refer to the shopping district which surrounds Shibuya Station, one of Tokyo's busiest railway stations. This area is known as one of the fashion centers of Japan, particularly for young people, and as a major nightlife area.

A trip to Tokyo wouldn't be complete without setting foot on Shibuya Scramble Crossing. Jostling through the surging wave of people that floods the intersection outside Shibuya Station every two minutes is an experience in itself. Snap a picture of the iconic Shibuya Crossing from above from one of the surrounding cafes or station buildings, or if you're quick and careful, take a picture from street-level from within the scramble itself.



Option 2: Daikanyama T-Site

Tokyo's Klein Dytham Architecture won an award at the World Architecture Festival for their work on Daikanyama T-Site, which is spread across three interlinked buildings adorned with lattices of interlocking Ts. That 'T' stands for rental chain Tsutaya, whose seemingly bottomless pockets helped fund the kind of book emporium that most capital cities can only dream of. It's easy to lose hours thumbing through the selections here, which include a good range of English-language titles, art books, antique tomes and magazine back issues. There are also music and DVD sections – Tsutaya's normal stock in trade – as well as branches of Starbucks and Family Mart, while you'll find specialist camera, bicycle and pet shops elsewhere in the complex. If you're looking to enjoy some vintage periodicals and cocktails in a sophisticated setting, meanwhile, the upstairs Anjin lounge is hard to beat. DAIKANYAMA TSUTAYA BOOKS (T-SITE) received the only mention from Japan in Flavorpill's "The 20 Most Beautiful Bookstores in the World."

Source: <https://store.tsite.jp/daikanyama/>,
<https://www.timeout.com/tokyo/shopping/>



2 June 2019: Shisui Premium Outlet

**SHISUI
PREMIUM OUTLETS®**
MITSUBISHI ESTATE · SIMON

<https://www.premiumoutlets.co.jp/en/shisui/>

2 Chome-4-1 Iizumi, Shisui, Inba District, Chiba 285-0912, Japan

HOURS

Jan.-Dec. 10:00AM-8:00PM

Closing Day: Once a year, on the third Thursday in February.



210 OUTLET STORES

The outlet closest to the Narita Airport, and easily accessible from the Tokyo city center. A multitude of Japanese brand names await you for an fulfilling shopping experience.

TAX-FREE STORES

Shisui Premium Outlets has two types of Tax-Free procedures.

- ① Tax-Free procedures is completed at the Tax-Free counter.
 - ② Tax-Free procedures is completed at each store when you purchase.
- At these Tax-free stores, if you meet the below conditions, you can shop Tax-free. Please show your passport to the cashier when you shop. Need to purchase in one day at the same store. (excluding tax)

- ① General items (clothes, shoes, bags, etc.) : 5,000JPY~unlimited
- ② Consumable items (food, cosmetics, etc.) : 5,000JPY~500,000JPY

If one purchase including general items and consumable items :

5,000JPY~500,000JPY

Special packing required. Cannot be used in Japan, must be taken out of Japan within 30 days after purchase.



DRESS CODE & CLIMATE

30 May 2019: Smart Casual



Climate source:

<https://www.accuweather.com/en/jp/tokyo/>

DAY

24°_{HI}

RealFeel® 29°
Precipitation 64%

Periods of clouds and sunshine, a couple of showers, mainly later



NIGHT

17°_{LO}

RealFeel® 18°
Precipitation 2%

Partly cloudy



31 May 2019: RoLD Polo shirt with optional jacket



DAY

24°_{HI}

RealFeel® 27°
Precipitation 4%

Mainly cloudy



NIGHT

17°_{LO}

RealFeel® 16°
Precipitation 1%

Partly cloudy



1 June 2019:

Advise to wear white, grey or black clothing in semi-business style for the lecture session at the Royal Thai Embassy during the mourning period of the late head of His Majesty the King's advisors, Gen. Prem Tinsulanonda.

DAY

23°_{HI}

RealFeel® 23°
Precipitation 1%

Sun and areas of high clouds



NIGHT

17°_{LO}

RealFeel® 17°
Precipitation 0%

Patchy clouds



1 June 2019: Memorable Night Theme "White with Your True Color(s)"

(Please use your imagination for this section.)

2 June 2019: Casual



DAY

26°_{HI}

RealFeel® 30°
Precipitation 0%

Sunshine and some clouds



NIGHT

18°_{LO}

RealFeel® 19°
Precipitation 0%

Clear to partly cloudy



MEALS

30 May 2019: Lunch



Not only is Tokyo Shiba Tofuya Ukai one of the most beautiful restaurants but it has one of the best tofu dishes in Tokyo. This restaurant used to be part of a 200-year-old brewery, then moved its location next to Tokyo Tower. It is an oasis and paradise of traditional Japanese garden in the midst of a bustling city. They specialize in tofu dishes, they have the freshest, smoothest tofu ever in Tokyo.

Tokyo Shiba Tofuya Ukai

4-4-13 Shiba-koen, Minato-ku, Tokyo 105-0011

TEL : +81-03-3436-1028

<https://www.ukai.co.jp/english/shiba/>

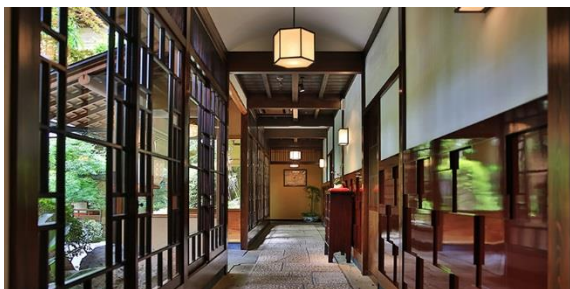
Access by Train:

- 5 mins walk from the Akabane-bashi-guchi Exit of Oedo Line Akabane-bashi Station

- 9 mins walk from the No. 1 Exit of Hibiya Line Kamiyacho Station

- 7 mins walk from the A4 Exit of Mita Line Shiba-koen Station

<https://www.ukai.co.jp/english/shiba/>



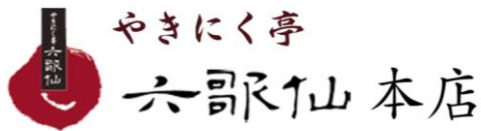
*menu changes every season for best quality ingredients



อาคารจีพีเอฟ วิทยุ อาคารบี ชั้น 16 ถนนวิทยุ เขตปทุมวัน กรุงเทพฯ 10330
GPF Building 16th Floor, Witthaya Road, Bangkok 10330, Thailand
Tel: +66 2118 9400 Ext. 213 - 214 Email: rold@tijthailand.org

MEALS

30 May 2019: Dinner



Rokkasen (六歌仙) is the one of the best restaurants in Japan that serves delicious and quality Wagyu beef. The restaurant is popular not only among locals but also foreign visitors from all around the world. This restaurant serves high quality beef and other meats cooked in three different styles: yakiniku, shabu-shabu and sukiyaki.

Rokkasen

1 Chome-3-1, Shinjuku City, Nishishinjuku, Tokyo 160-0023

TEL : +81-03-3348-8676

Access by Train:

2 mins walk from Seibu Shinjuku Line, Shinjuku station

1 min walk from Marunouchi Line, Shinjuku station

3 mins walk from JR Line, Shinjuku station

<https://www.rokkasen.co.jp/en/>



*all pictures shown are for illustration purpose and may differ from the actual one.



อาคารจีพีเอฟ วิทยุ อาคารบี ชั้น 16 ถนนวิทยุ เขตปทุมวัน กรุงเทพฯ 10330
GPF Building 16th Floor, Witthaya Road, Bangkok 10330, Thailand
Tel: +66 2118 9400 Ext. 213 - 214 Email: rold@tijthailand.org

MEALS

31 May 2019: Lunch



The restaurant is located in Forest Inn Showakan, a hotel and banquet facility in the area not so far from UNAFEI. An open kitchen restaurant facing the garden. You can enjoy cuisine making use of the seasonal ingredients in a buffet style.

Centro Restaurant
Forest Inn Showakan
Showa no Mori, Akishima-shi, Tokyo, 196-8601
TEL : +81-42-542-1234
Access: Shuttle bus service from Akishima Station North Exit of JR Ome Line.
(About 7 minutes on foot)
<https://www.showakan.co.jp/en/#restaurant>



*all pictures shown are for illustration purpose and may differ from the actual one.



อาคารจีพีเอฟ วิทยุ อาคารบี ชั้น 16 ถนนวิทยุ เขตปทุมวัน กรุงเทพฯ 10330
GPF Building 16th Floor, Witthaya Road, Bangkok 10330, Thailand
Tel: +66 2118 9400 Ext. 213 - 214 Email: rold@tijthailand.org

MEALS

1 June 2019: Lunch

Lunch at 'Hokkaido Restaurant' in Shibuya area offers variety of cold & hot dishes from local fresh ingredients. The menu includes Izakaya (Tavern), Seafood, and Shabu Shabu (Japanese Steamboat).



1 June 2019: Dinner

Memorable Night Dinner Party under theme "White with Your True Color(s)" will be held at a function room at East 21 Hotel (the accommodation for RoLD Group). Hotel food offers in buffet style with western menu and some local selection. A hot vegetarian dish will also served. The special dinner party includes free-flow of soft drink and alcoholic drinks such as wine, beers, whiskey. Participants are allowed to bring other drinks or liquor to join the party without extra charges.



*all pictures shown are for illustration purpose and may differ from the actual one.



อาคารจีพีเอฟ วิทยุ อาคารบี ชั้น 16 ถนนวิทยุ เขตปทุมวัน กรุงเทพฯ 10330
GPF Building 16th Floor, Witthaya Road, Bangkok 10330, Thailand
Tel: +66 2118 9400 Ext. 213 - 214 Email: rold@tijthailand.org

HOTEL & NEARBY

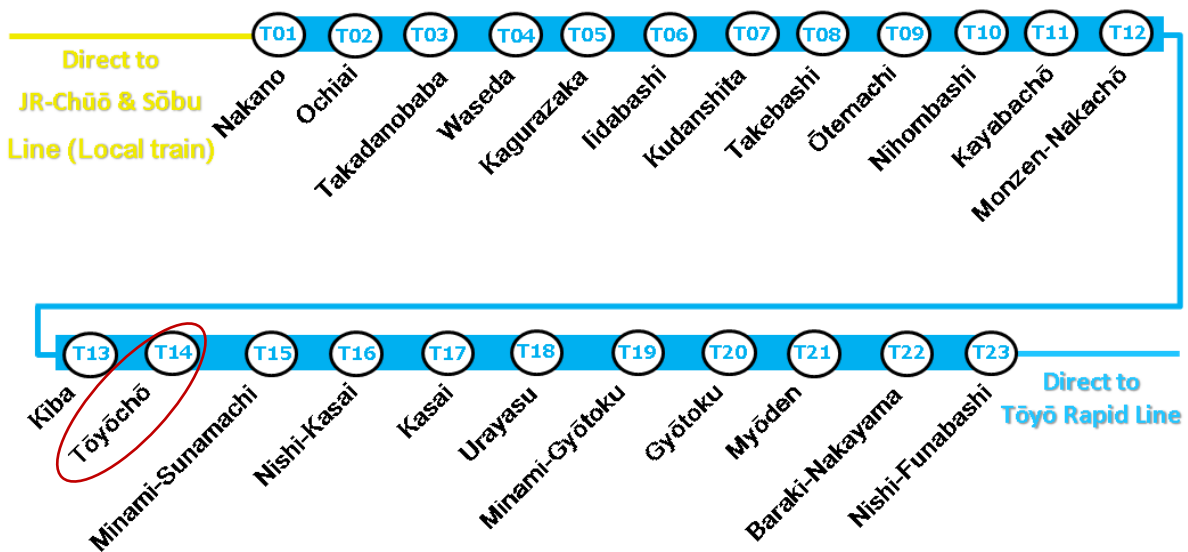
Address: 6-3-3, Toyo, Koto Ward, Tokyo 135-0016
TEL : +81-03-5683-5683
<https://www.hotel-east21.co.jp/en/>

Access: Tokyo Metro Tozai Line "Toyocho Station"
Exit 1 (8 minutes on foot)

The group will be staying at Hotel East 21 Tokyo which is in the area of Koto City, Tokyo. Featuring 8 food and beverage options and a large outdoor pool, Hotel East 21 Tokyo is an 8-minute walk from **Toyocho Subway Station**. The spacious rooms come with free WiFi. Free shuttles to Tokyo Disney Resort are available with an advance reservation. The classically furnished rooms at Tokyo Hotel East 21 include an attached bathroom with bathtub. Nearby Toyocho Station offers direct subway access to Otemachi and Nihonbashi in about 10 minutes. JR Tokyo Train Station and the Imperial Palace are a 15-minute taxi ride away. Tokyo Sky Tree Tower is a 20-minute drive away, and Tokyo Disney Resort is a 30-minute drive. Airport limousine buses to/from Narita and Haneda airports are offered at an extra charge.



T Tōzai Line (東西線)





Access to The East Health Club's fitness room, indoor swimming pool, sauna and bath are available to guests over the age of 18, for an extra fee. At a surcharge, guests can also use the outdoor pool, which is open during the summer months. Guests can take advantage of concierge services. Panorama Lounge and Sazanka Japanese Restaurant offer 21st-floor skyline views. Chinese dishes are served at Toen, and Brasserie Harmony has French foods.



East 21 plaza is right at the footstep of the hotel offers variety of shops, café, restaurants and a supermarket which opens from 9am – 11pm.



AIRPORT SHUTTLE BUS

Airport Shuttle Bus to and from Narita International Airport (all terminals) has service stop right at the East 21 Hotel. The reservation for routing from the hotel to the airport can easily be booked in advance with the concierge at the hotel.

Online reservation available at <https://www.limousinebus.co.jp/en/>



To Narita Airport Yen 2,800 / person *required reservation at hotel concierge

From Hotel East 21 Tokyo	Departure	Arriving at Narita Airport	Terminal 3	Terminal 2	Terminal 1 (TG)
	8:10		9:32	9:35	9:40
	9:10		10:32	10:35	10:40
	14:20		15:37	15:40	15:45
	15:20		16:37	16:40	16:45

From Narita Airport Yen 2,800 / person *ticket available at airport and online

From Narita Airport	Terminal 3	Terminal 2	Terminal 1 South Wing (TG)	Terminal 1 North Wing	To Hotel East 21 Tokyo	Arrival Time
	10:20	10:25	10:30	10:35		12:10
	14:30	14:35	14:40	14:45		16:10
	16:00	16:05	16:10	16:15		17:40
	17:25	17:30	17:35	17:40		19:05

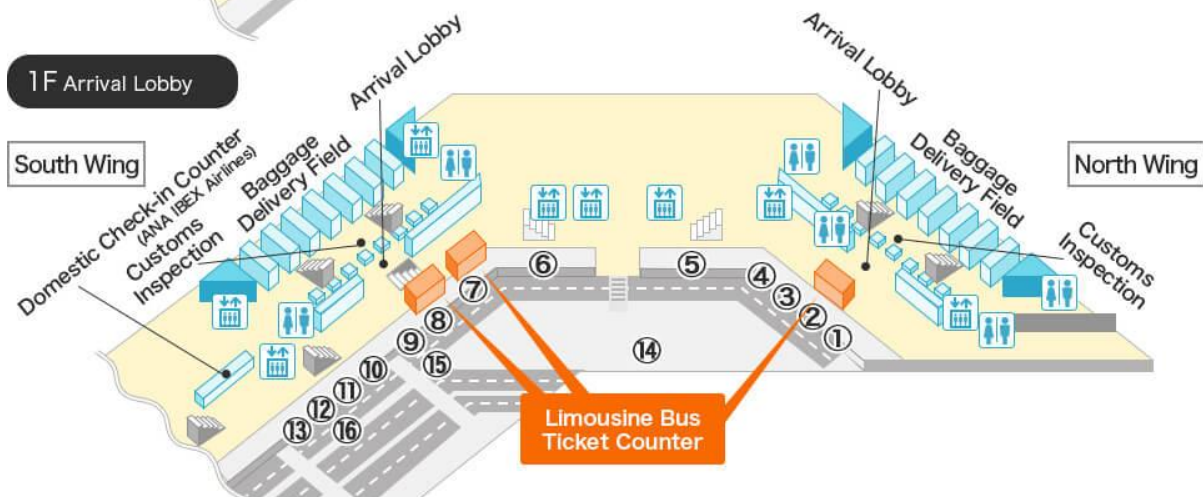


Limousine Bus Ticket Counter at Narita Airport – South Wing

4F Departure Lobby



1F Arrival Lobby



● Limousine Bus Stop

- | | |
|---|--|
| <p>⑩① Tokyo City Air Terminal, Tokyo Station, Nihonbashi
Ikebukuro, Mejiro, Kudan and Korakuen
Shiba (HOTEL THE CELESTINE TOKYO SHIBA), Shiodome,
Takeshiba, Odaiba, Ariake
Hibiya (The Peninsula Tokyo), Ginza
Shibuya, Futakotamagawa</p> <p>⑪② Shinjuku
Hibiya (Imperial Hotel, Dai-Ichi Hotel Tokyo)
Shiba (Except HOTEL THE CELESTINE TOKYO SHIBA)
Roppongi, Akasaka
Asakusa, Kinshicho, Toyosu, Toyochi, Shinkiba
Tachikawa, Akishima</p> | <p>⑫③ Yokohama City Air Terminal, Minatomirai
Haneda Airport</p> <p>⑬④ Ebisu, Shinagawa
Wakabada, Inagi, Chofu
Takao, Hachioji
Minami Osawa, Keio Tama Center, Seiseki Sakuragaoka
Fujimino, Niiza, Shiki, Asakada
Shin Koshigaya, Soka, Yashio</p> <p>⑤ Tokyo Disney Resort
Shin-Urayasu</p> <p>⑨ Kichijoji Station</p> |
|---|--|



To Haneda Airport Yen 930 / person *required reservation at hotel concierge

From Hotel East 21 Tokyo	Departure	Arriving at Haneda Airport	Terminal 2	Terminal 1	International
	6:25		6:50	6:55	7:05
	7:55		8:20	8:25	8:35
	9:25		9:50	9:55	10:05
	11:25		11:50	11:55	12:05
	14:05		14:30	14:35	14:45
	16:05		16:30	16:35	16:45
	19:05		19:30	19:35	19:45
	20:05		20:30	20:35	20:45

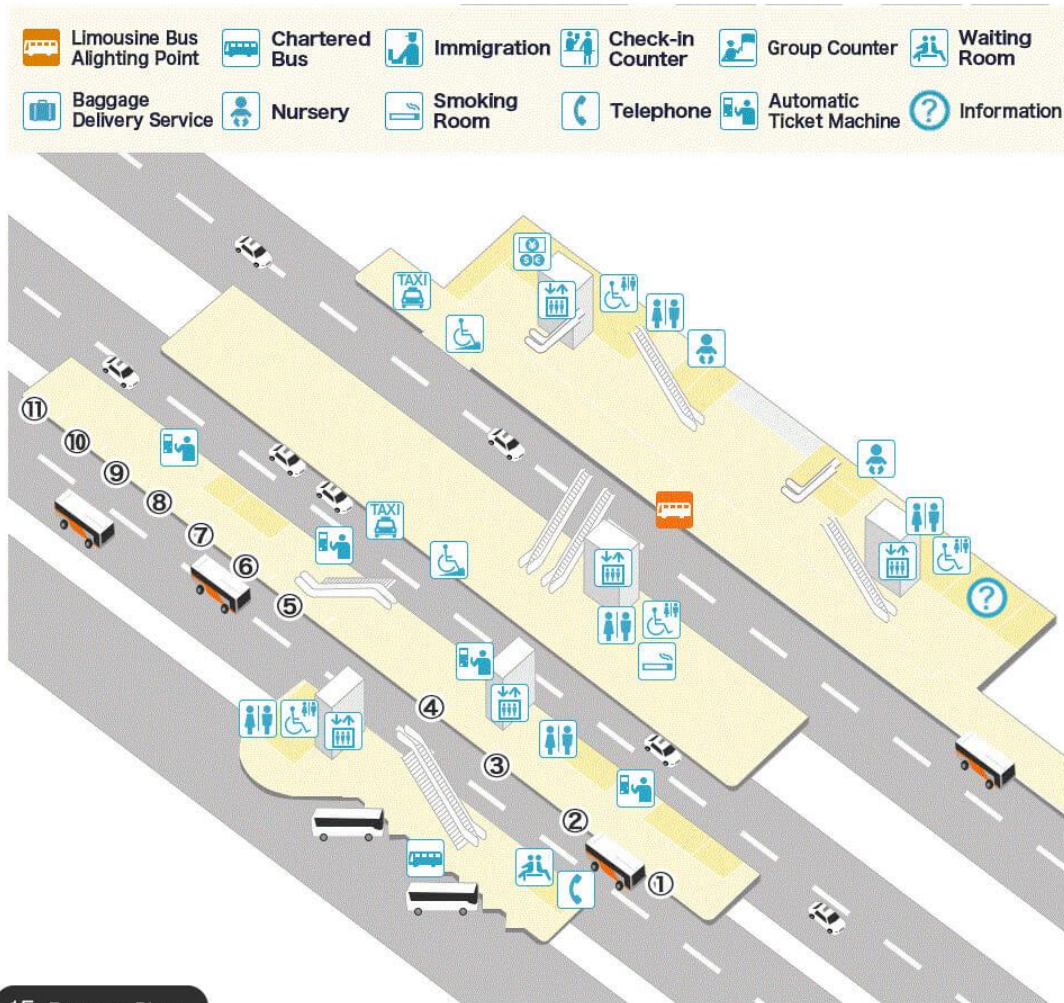
From Haneda Airport Yen 930 / person *ticket available at airport and online

From Haneda Airport	International	Terminal 2	Terminal 1	To Hotel East 21 Tokyo	Arrival Time
	11:45	11:55	12:00		12:35
	13:45	13:55	14:00		14:35
	16:45	16:55	17:00		17:35
	17:45	17:55	18:00		18:35
	18:45	18:55	19:00		19:35
	19:45	19:55	20:00		20:35
	20:45	20:55	21:00		21:35
	21:45	21:55	22:00		22:35
	23:05	23:15	23:20		00:25

Online reservation available at <https://www.limousinebus.co.jp/en/>



Limousine Bus Ticket Counter at Haneda Airport – International Terminal



1F Entrance Plaza

● Limousine Bus Stop

- | | |
|---|---|
| <p>① Tokyo Station
Takao, Hachioji, Hino
Tokorozawa, Higashi-Tokorozawa
Urawa
Kagohara, Kumagaya, Shinrin-Koen, Sakado
Maebashi, Takasaki
Utsunomiya, Sano
Hitachi, Mito, Ishioka
Isesaki, Kiryu, Ota, Oizumi, Tatebayashi</p> <p>② Ikebukuro
Tokyo City Air Terminal
Shiba, Ebisu, Shinagawa
Odaiba, Ariake
Toyosu
Syakujii-Koen, Wakoshi
Omiya
Kawagoe</p> <p>③ Shinjuku
Otemachi, Marunouchi
Hibiya, Shiodome, Ginza
Roppongi, Akasaka
Mejiro, Kudan, Kourakuen, Akihabara
Nerima, Nogata, Nakano
Nishikokubunji, Kokubunji, Musashi-Koganei,
Fuchu, Wakabadai, Inagi, Chofu
Minami Osawa, Keio Tama Center, Seiseki Sakuragaoka</p> | <p>④ Ikebukuro, Shinjuku (Depart 1:00, 1:40, 2:20)
Asakusa, Akihabara, Tokyo Station, Ginza (Depart 1:15, 2:00)
Ariake, Odaiba, Toyosu, Toyokocho, Kasai, Ichinoe (Depart 1:25)</p> <p>⑤ Shibuya (5:00 ~ 23:29)
Kichijoji</p> <p>⑥ Asakusa, Inshicho, Toyokocho
Narita Airport
Tokyo Disney Resort
Shin-Urayasu
Ichikawa, Gyotoku
Kameari, Koiva, Ichinoe, Kasai
Tsudanuma
Yotsukaido, Inage
Oami, South East Chiba</p> <p>⑦ Shibuya (23:30 ~ 4:59)
Makuhari, Chiba</p> <p>⑧ Kisarazu</p> |
|---|---|



MEMO

This image shows a full page of a handwriting practice worksheet. It consists of multiple rows of horizontal dashed lines spaced evenly down the page, providing a guide for letter height and placement. The background is plain white, and there are no other markings or text present.