

SDGs: the Significance of the Rule of Law and the Partnership for the Goals

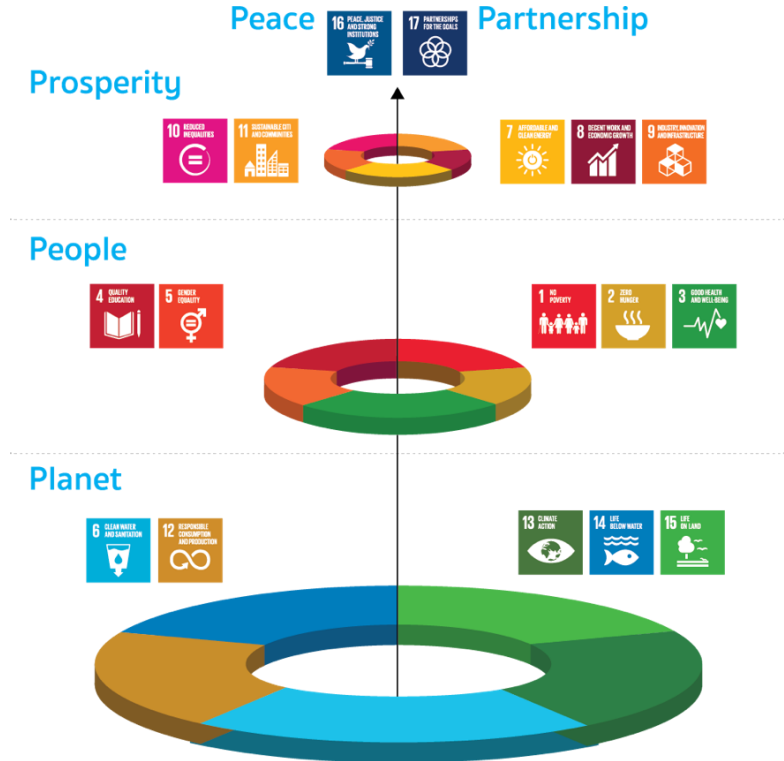


Renaud Meyer
Resident Representative

The SDGs



The Five Pillars of Sustainable Development



SDG Snapshot – ASEAN (source: UN ESCAP)



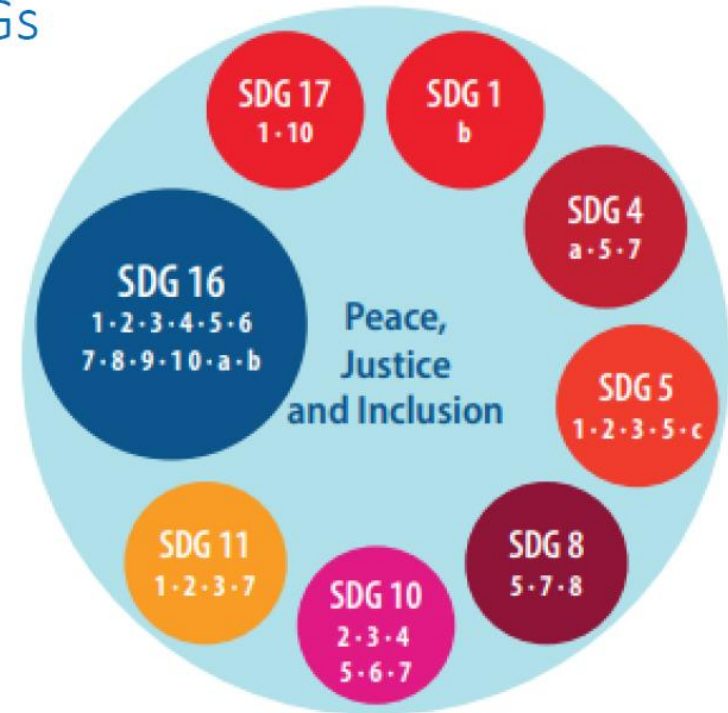
- Central to sustaining peace by strengthening institutions at all levels
- Rights-based approach, addressing the root causes of poverty
- Requires full-ownership of the process and investment
- Free, active and meaningful participation
- The most vulnerable and marginalized groups in societies are engaged as “actors” rather than just “beneficiaries”

SDG 16 as an enabler for the SDGs



In addition to the direct 12 targets within SDG 16, **24 targets in other SDGs** contribute to peace, justice and inclusion

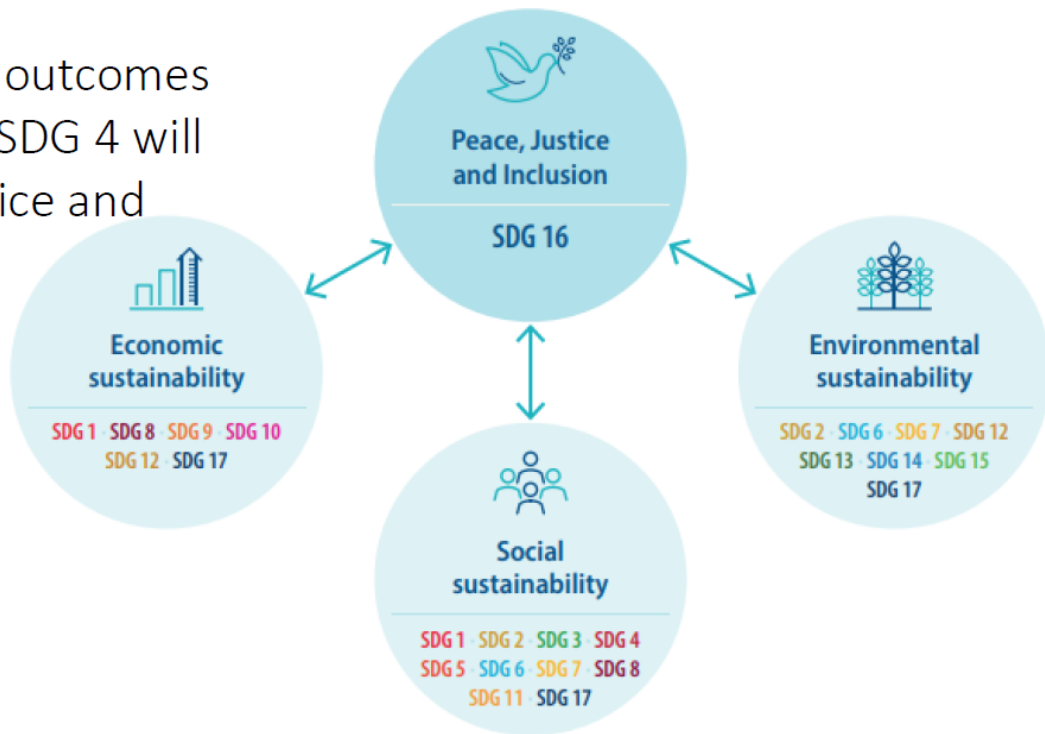
- For example, SDG 4 (Quality Education) target 7 entails education for human rights and a culture of peace.



SDG 16 Interlinkages



- Progress on SDG 16+ will enhance economic growth (SDG 8).
- SDG 16+ will improve education outcomes (SDG 4) and in turn progress on SDG 4 will promote a culture of peace, justice and inclusion.



Factors to create trust

Efficiency and effectiveness

Fairness

Responsiveness



Innovative approach



UNDP support to SDG achievement in Thailand

1. **SDG Localization**
2. **SDG Financing:** Introducing an Integrated National Financing Framework
3. **SDG Mobilization:** Youth, Parliament, Civil Society, Vulnerable Communities
4. **Business support to SDGs:** Impact measurement and management

Take Away Messages:

1. **SDG16** is a Goal in itself but also an enabler to achieve the other Goals while fulfilling the principles underpinning Agenda 2030: Rights agenda, inclusion, LNOB, etc...
2. Realizing the ambitions of the 2030 Agenda requires a **WHOLE-OF-SOCIETY** approach. Governments, citizens, civil society organizations, academia and the private sector all have roles to play in contributing to sustainable development outcomes.
3. The development challenges are becoming increasingly complex. COVID-19 is a good example of this. Solutions require a new **INNOVATIVE** and **INTEGRATED** approach
4. To accelerate the implementation of the SDGs. **LOCALIZATION** and **EMPOWERMENT** are required to best tackle challenges faced by communities.
5. **TRUST** is a pre-requisite to achieving social cohesion and a stronger social contract, enabling the attainment of the SDGs



Contact us

United Nations Development Programme

โครงการพัฒนาแห่งสหประชาชาติ

ชั้น 12 อาคารสหประชาชาติ ถนนราชดำเนินนอก กรุงเทพมหานคร 10200 ประเทศไทย

อีเมล: undp.thailand@undp.org | โทร: +66 2 288 3350



UNDPThailand



UNDPThailand



UNDP Thailand



undpthailand



undp-thailand



UNDPThailand



UNDPThailand